



SFC Power Manager 3G

Portable and intelligent power distribution hub for maximum flexibility and autonomy during deployment



small, lightweight and robust



Plug & Play solution



universal charger



Solutions, features and references

Nowadays, the modern soldier has to carry numerous electrical devices. All these devices have different mains and charging units to guarantee the power supply.

The SFC Power Manager 3G enables the soldier to use all energy sources available in the field such as hybrid batteries, solar panels, vehicle power and, of course, fuel cells to power devices or charge batteries.

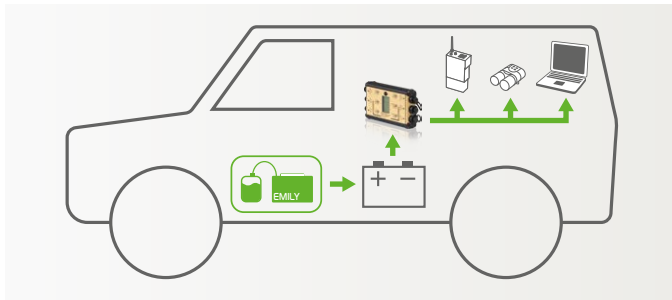
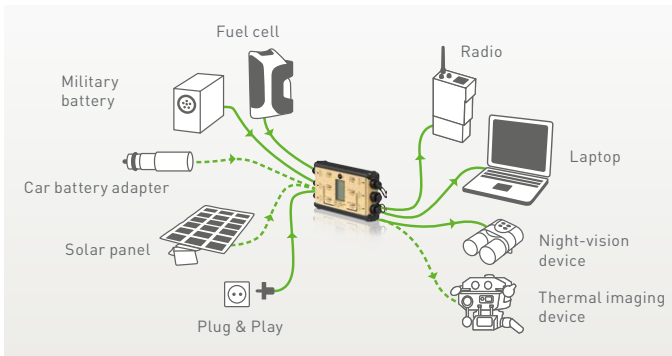
The SFC Power Manager 3G automatically detects the connected devices, thanks to intelligent cable coding, and ad-

justs the output voltage correspondingly. This results in very low power loss and super efficient power distribution which is essential for operations in the field.

Carrying separate chargers is therefore redundant and resulting in additional storage space.

SFC Power Manager 3Gs of different generations are already being used by the US Air Force, the German Bundeswehr and many other defence organisations.

The energy network



Overview

- Portable, intelligent power distribution
- Versatile, practical battery charger
- Increase in sustainability of operations
- Reduces weight and pack size
- Portable: In the energy network, the SFC Power Manager 3G can charge several batteries simultaneously
- In the vehicle: The SFC Power Manager can intelligently distribute the vehicle's energy to different loads
- For stationary systems: In combination with an EMILY Cube 2500 fuel cell, the SFC Power Manager 3G can ensure the energy supply for a computer subnet or a ground radar, for example
- Expandable with all military SFC fuel cells - they can serve as a power source for the SFC Power Manager 3G.
- New loads can be added later using a specific, coded cable
- Tested since 2010 in the field: The German Bundeswehr equips its soldiers with the portable SFC energy network

Technical data	
Weight	520 g
Dimensions L x W x H	162 x 95 x 36 mm
Display	LCD full text display
Connections	2 power inputs / outputs (500 W) 2 bi-directional battery charging ports (65 W) 2 battery and device outputs (65 W)
Voltage range	8 - 33 V DC
Current carrying capacity	5 A / 12 A / 15 A (short-term)
Power range	max. 500 W
Cable identification	ID chip
Protection against	overvoltage overload short circuit false polarity overheating Water-proof IP65
Operating temperature	-32 °C to +55 °C
Military ruggedisation & electromagnetic compatibility	MIL-STD and VG standard

Standard cable and accessories*	
	MBITR PRC 148 / OUT
	BB-2590 IN / OUT
	12 V vehicle plug / OUT
	12 / 24 V vehicle socket / IN
	BT-70884 for adapting to PRC 117
	110 W / 150 W mains adapter
	CF 18/19 Toughbook
	Solar panel 62 Watt / with MPP tracking

* additional cables available

Subject to changes. Errors excepted. 1507-v2 / 650901077

Germany

SFC Energy AG (HQ)
Eugen-Sänger-Ring 7
85649 Brunnthal
Germany

T +49 89 673 592-0
F +49 89 673 592-369
M info@sfc.com
W www.sfc-defense.com

